

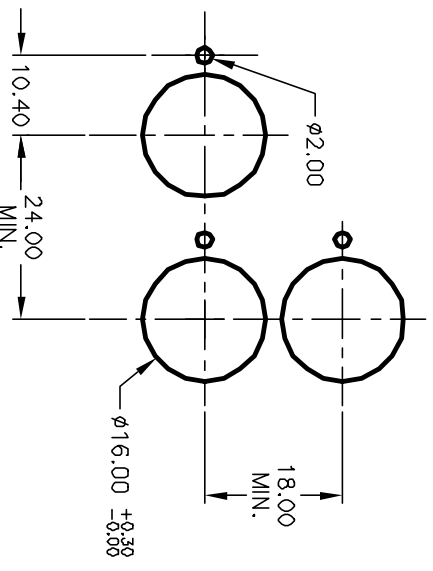
1.0 ± 0.2  
3.0 ± 0.4  
a-L-b (+)

CONTACT CONFIGURATION  
SPST

PARTS LIST		
ITEM	QTY.	PART NO. PART DESCRIPTION
1	1	F040004 D16 EE T1 1
2	1	F050421 50-004-21 (YELLOW L.E.D.)
3	1	F050216 50-002-16 (Transparent YEL lens)

NOTES:

1. ALL DIMENSIONS IN MM
2. GENERAL TOLERANCE: X.X=±0.4  
X.XX=±0.25
3. RATINGS: 5A@250V AC,  
8A@125V AC
4. CONTACT MATERIAL: COPPER ALLOY W/Gold Plating
5. TRAVEL: 3.0mm (Total)
6. MECHANICAL LIFE: >100,000 Cycles
7. ELECTRICAL LIFE: >50,000 Cycles
8. INSULATION RESISTANCE: >1000 MILLI-OHMS
9. OPERATING TEMP: -20°C to 55°C
10. LAMP VOLTAGE: 12VDC (L.E.D.)



RECOMMENDED PANEL MOUNTING  
SCALE 1:1

REV.	ECN No.	DESCRIPTION	DATE	CHKD
A	12223	RELEASE FOR PRODUCTION	6/12/02	CJB

TITLE	SCALE	DATE	DR	DWG	REV
D16 EE T11 J YEL YEL TRANSPARENT/FLAT LENS	1.5:1	6/12/02	CB	XF0482P	A



THE INFORMATION CONTAINED IN THIS DOCUMENT IS PROPRIETARY TO E-SWITCH AND IS NOT TO BE COPIED OR TRANSFERRED